

ORIGINAL ARTICLE

Clinical comparison between two different splint designs for temporomandibular disorder therapy

ASBJORN JOKSTAD, ARILD MO & BERIT SCHIE KROGSTAD

*Institute of Clinical Dentistry, University of Oslo, Oslo, Norway***Abstract**

Objective. To compare splint therapy in temporomandibular disorder (TMD) patients using two splint designs. **Material and Methods.** In a double-blind randomized parallel trial, 40 consenting patients were selected from the dental faculty pool of TMD patients. Two splint designs were produced: an ordinary stabilization (Michigan type) and a NTI (Nociceptive trigeminal inhibition). The differences in splint design were not described to the patients. All patients were treated by one operator. A separate, blinded, examiner assessed joint and muscle tenderness by palpation and jaw opening prior to splint therapy, and after 2 and 6 weeks' and 3 months' splint use during night-time. The patients reported headache and TMD-related pain on a visual analog scale before and after splint use, and were asked to describe the comfort of the splint and invited to comment. **Results.** Thirty-eight patients with mainly myogenic problems were observed over 3 months. A reduction of muscle tenderness upon palpation and self-reported TMD-related pain and headache and an improved jaw opening was seen in both splint groups ($p < 0.05$; paired *t*-test and Wilcoxon signed-ranks tests). There were no changes for TM joint tenderness upon palpation. No differences were noted between the two splint designs after 3 months for the chosen criteria of treatment efficacy ($p > 0.05$; Mann-Whitney U-test). **Conclusion.** No differences in treatment efficacy were noted between the Michigan and the NTI splint types when compared over 3 months.

Key Words: *Craniomandibular disorders, random allocation, temporomandibular dysfunction, temporomandibular joint disorders*

Introduction

Patients with signs and symptoms of temporomandibular disorders (TMD) are commonly treated with occlusal splint therapy [1], although the efficacy remains uncertain and the actual mechanism of action remains debatable [2–4]. Most occlusal splints are relatively simple to make, i.e. chairside, in the clinic using a vacuum pressure method, or by a dental technician following impressions and a registration of the jaw relationship. The most commonly used occlusal splint is the stabilization type [5,6], which appears not to cause any irreversible occlusal changes, even after prolonged use. Other splint designs, in contrast, are designed to deliberately change the occlusion. These were previously recommended for patients with anterior disk displacement, followed by extensive occlusal rehabilitation. The procedure is seldom recommended now because it is irreversible, the intervention is

biologically invasive as well as expensive, and the treatment outcome is not always predictable [5,6]. However, it can also be questioned whether the splint design in itself is of major significance, because it has been demonstrated that splints without an occlusal coverage will also give rise to effects for patients with TMD [7–11] or decreased nocturnal masticatory muscle activity [12].

A new splint design has recently been introduced, named the NTI-tss splint (*Nociceptive Trigeminal Inhibition-tension suppression system*). It is being aggressively marketed worldwide, e.g. in Australia, Canada, The Netherlands, Scandinavia, and the USA. Anecdotal surveys report that many dentists in Sweden and Norway favor this type of splint for patients with TMD [13] despite practically non-existent scientific documentation. As late as in October 2003, the Swedish Health Authorities issued the following official counsel to the Swedish Dental Association: “the

Correspondence: Asbjørn Jokstad, Department of Prosthetic Dentistry and Stomatognathic Physiology, Faculty of Dentistry, University of Oslo, P.O. Box 1109, NO-0317 Oslo, Norway. Tel: +47 2285 2291. Fax: +47 2285 2390. E-mail: jokstad@odont.uio.no

(Received 7 March 2005; accepted 20 April 2005)

ISSN 0001-6357 print/ISSN 1502-3850 online © 2005 Taylor & Francis Group Ltd
DOI: 10.1080/00016350510019982

NTI splint cannot currently be valued as *lege-artis*" [14]. Moreover, a very recent report based on a randomized clinical trial (RCT) from Sweden even casts doubt on the efficacy of this new splint type [15]. This contrasts with the positive therapeutic effects of stabilization splint use demonstrated in other recent RCTs from Malmö, Sweden [16,17].

In view of the current growing use of the NTI-tss splint among practitioners, it is important to assess its efficacy. The current clinical trial aimed to compare the outcome of splint therapy over 3 months in a random group of patients with different TMD diagnoses using the conventional stabilization (Michigan type) splint and the NTI-tss splint designs. Our hypothesis was that the treatment outcomes would be comparable, but that the patients would perhaps prefer the NTI-tss splint because of its smaller dimensions.

Materials and methods

Subjects

The present study protocol was endorsed by the Regional Committee for Medical Research Ethics in south Norway (REK-Sør) and was approved by the Norwegian patient information privacy ombudsman.

Patients were referred to or applied for treatment due to TMD problems at the Department of Prosthetic Dentistry and Stomatognathic Physiology, Faculty of Dentistry, University of Oslo, Norway. Adults who had experienced common symptoms of TMD [18] (i.e. impaired range of movement, impaired TM-joint function, muscle pain, TM-joint pain, and/or pain on movement of the mandible) that had lasted for at least 6 months were targeted for participation in this trial. At the first visit, one of the authors (A.M.) collected the patients' anamnestic data and case histories, including questions about pain related to the TM and neck region, use of medication, and general musculoskeletal pain elsewhere. No attempts were made to evaluate qualitatively the patients' headache or general musculoskeletal pain for further differential-diagnostic purposes. Finally, a functional examination of the masticatory system and diagnoses of the patients were made according to the Research Diagnostic Criteria for Temporomandibular Disorders (RDC/TMD) [19].

Verbal counselling was given in accordance with the diagnosis. The patients who were considered would benefit from splint therapy were given an oral and written invitation to participate in an evaluation trial for research purposes. The exclusion criteria were the presence of complete or removable partial prostheses with distal extensions or other treatments for TMD during the study, and individuals with recent facial or cervical trauma. The patients were not provided any specific details about the two splint designs to be compared, nor particular design differences. The participants were invited to change splint type during the course of the trial if they were unhappy with the

treatment outcome or splint assignment. Patient recruitment continued until 40 patients had agreed to participate. In total, 45 patients were invited to participate, but 5 declined and were consequently offered conventional stabilization splint (Michigan type) therapy. These patients are not included in this report. The recruitment period was from September 2002 to October 2003.

Randomization

The study sample comprised 40 individuals (35 F and M), their ages ranging from 1 to 62 years (mean 37 years). The RDC/TMD diagnoses were: myofascial pain ($n=20$), myofascial pain + disk displacement ($n=19$), and disk displacement ($n=1$). Twenty patients were each allocated an ordinary stabilization splint (Michigan type) and 20 a NTI. The allocation was randomized and done consecutively by someone using a random number list. This person was independent of the trial and unaware of the patient names or diagnoses, and was not involved at any stage in the clinical treatment phase. An allocation list kept by this person was used at the completion of the trial to verify that the patients had been correctly assigned into the allocated splint group. One dentist (A.M.) provided all the treatments throughout the full clinical trial period, and was the only individual who knew the splint type-patient codes.

Interventions

Impressions (Alginoplast; Kulzer GmbH, Hanau, Germany) and an intraoral centric relation record in wax (Aluwax; Aluwax Dental Co., Allendale, USA) were taken of all patients. The stabilization splints were made in heat-cured acrylics by one commercial dental laboratory. The NTI splints were made chairside by the dentist. The stabilization splints were constructed to provide separation of the posterior teeth during protrusion and a canine rise during lateral excursions. Before use, these splints were adjusted to freedom in centric and to include multiple bilateral occlusal contacts in the retruded contact position. The NTI splints were made according to the manufacturer's instructions [20] and adjusted chairside before delivery. Briefly, this was done by selecting a standard acrylic matrix form that fitted passively over the maxillary incisors and by filling this with an acrylic for temporary crowns, which was then left to polymerize intraorally. The finished splint has a "discluding element" which contacts the two lower centrals upon closure and is supposedly an essential element of the NTI splint's alleged beneficial effects (Figure 1). All participants were instructed to wear their splint during night-time.

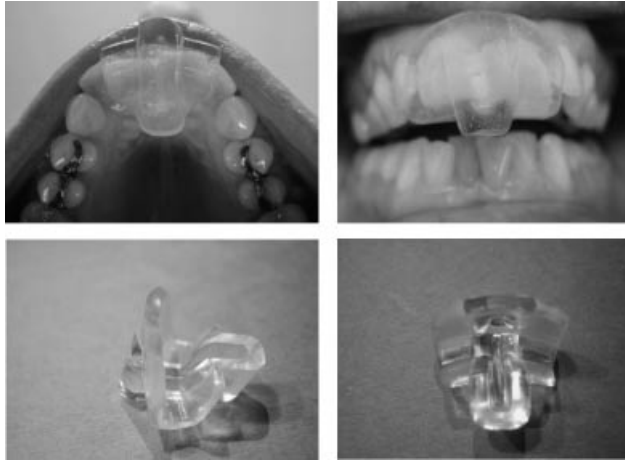


Figure 1. NTI splint. Upper row shows correct intraoral placement over the upper four incisors with a “discluding element” contacting the two lower central incisors. The lower row shows the matrix as it is delivered from the manufacturer.

Outcomes and examinations

At the time of splint delivery, the patients reported their suffering due to headache and TMD-related pain on a 0 to 10 cm visual analog scale (VAS). The two anchor words on a horizontal scale were the Norwegian words “Ingen” and “Uutholdelig”, which can be interpreted as “None” and “Intolerable”. An experienced physical therapist (B.S.K.) assessed the interincisal distance at unassisted jaw opening, as well as tenderness by palpation of the TM joints and the masticatory, neck, and shoulder muscles. The maximal unassisted jaw opening was assessed using a millimeter ruler. The TM joints were palpated laterally to the condyles under initial jaw opening movement. The masticatory muscles described in the RDC/TMD were palpated, i.e. m. temporalis anterior, m. temporalis posterior, m. masseter superior division, m. masseter profundus. In addition, neck and shoulder muscles were palpated to assess whether the *condition could possibly be related to inadequate breathing and/or poor posture*. These were m. temporalis insert, m. sternocleidomastoideus, m. trapezius, and the neck muscles at the C4 level.

Joint and muscle tenderness was graded into three categories: slight tenderness, moderate tenderness, and severe tenderness represented by a withdrawal reflex. The physical therapist has previously participated in calibration courses with other physical therapists [21], in addition to repeated calibration of the finger pressure using a bite force recorder [22]. In order to obtain a general impression of the state of muscle tenderness, a total score for tenderness was calculated from the sum of the palpation scores of the individual muscles. A simple multiplicative factor of 2 was used for moderate tenderness and 4 for severe tenderness. Thus, the total score for muscle tenderness was calculated as: the number of muscles with slight tenderness \times 1 + the number of muscles with moderate

tenderness \times 2 + the number of muscles with severe tenderness \times 4.

The patients who had comorbid general musculoskeletal symptoms were not provided with any additional treatment beyond general counseling. Moreover, they were instructed not to begin with new medications during the 3-month trial, and those already receiving medication were asked not to change their prescription.

The same process was also carried out after 2 and 6 weeks and 3 months by the same examiners. All participants obtained the same type of adjunctive treatment (counseling and muscle relaxation exercises) in the course of the visits, and the splint was adjusted if required by the patient or as deemed necessary by the clinician. In addition, the patients reported on a 0 to 10 cm VAS how comfortable they found the splint use and they were invited to submit comments on experiences in connection with the splint therapy. The anchor words on a horizontal VAS were the Norwegian terms “Behagelig” and “Ikke behagelig”, translated as “Comfortable” and “Uncomfortable”. The same physical therapist (BSK) carried out all the muscle examinations throughout the study and the patients’ group allocation remained unknown to this examiner throughout the trial period.

Data analysis

The characteristics of the participants in the two study arms at baseline were compared using three statistical tests. Proportions were compared using the Fisher exact test. Student’s *t*-test was applied for comparing continuous variables and the Mann-Whitney U-test for comparing ordinal variables. Assessment of the statistical significance of changes of subjectively reported symptoms according to VAS scores between the baseline and 3-month examination was made using Wilcoxon signed-ranks tests with two-tailed significance. The changes of maximum jaw opening between the baseline and the 3-month examination were measured using paired *t*-tests. Differences between the two treatment groups after 3 months’ splint therapy were assessed using the Mann-Whitney U-test with two-tailed significance. All statistical tests were carried out by one of the authors (A.J.) unaware of the splint type codes at the time of the statistical analyses.

Results

The proportion of patients reporting comorbid general pain, headache, and use of medications was high (Table I). The randomized allocations seemed to generate groups at baseline that did not differ with regard to patient characteristics (Table II). The two patient groups differed slightly regarding prevalence of TMJ pain upon palpation (Mann-Whitney U-test, $p=0.03$) and proportion of patients with general pain

Table I. Self-reported general musculoskeletal pain, descriptor of headache, and regular usage of medicines

	General body pain	Wake up with headache	Regular medicine
178	Table I. Self-reported general musculoskeletal pain, descriptor of headache, and regular usage of medicines		
179	General body pain	Wake up with headache	Regular medicine
180	<hr/>		
181	NTI splint (<i>n</i> = 18)		
182	Yes	Yes	None
183	Yes	None	None
184	Yes	Yes	Fluoxetine (Psychoanaleptica)
185	Yes	Yes	Cetirizin (Antihistamine)
186	Yes	Yes	Paracetamol (Analgetic)
187	Yes	Yes	Codeine (Analgetic)
188	No	Increase during day	Codeine (Analgetic)
189	No	Yes	None
190	No	Yes	None
191	No	Yes	Diclofenac (Antimigrene)
192	No	Varies	Piroxikam (Antirheumatic)
193	No	Varies	None
194	No	None	Paracetamol (Analgetic)
195	No	Increase during day	None
196	No	Increase during day	Cetirizin + Bricanyl (Antihistamine + asthmamed)
197	No	Increase during day	Cetirizin (Antihistamine)
198	No	Increase during day	None
199	Stabilization splint (<i>n</i> = 20)		
200	Yes	Yes	None
201	Yes	Yes	None
202	Yes	Yes	None
203	Yes	Yes	None
204	Yes	Yes	None
205	Yes	Yes	Bricanyl + Viox (Asthmamed + Antirheumatic)
206	Yes	Yes	Paracetamol + Ibuprofen (Analgetic + Anti-inflammatory)
207	Yes	Varies	None
208	Yes	Varies	None
209	Yes	Varies	Amitriptylin (Psychoanaleptica)
210	Yes	Varies	Methotrexate (Immune suppressive)
211	Yes	Increase during day	Venlafaxin (Psychoanaleptica)
212	Yes	Increase during day	Bricanyl (Asthmamedicine)
213	Yes	Increase during day	Klonazepam (Antiepileptica)
214	Yes	Constant	Karisoprodol + Codeine (muscle relaxant + analgetic)
215	No	None	Fenemal (Antiepileptica)
216	No	Increase during day	None
217	No	Varies	Ibuprofen (Anti-inflammatory)
218	<hr/>		

(Fischer exact test, $p=0.02$), while no other differences were detected.

During the observation period, one patient dropped out of the study as a result of disinterest, and one patient was excluded owing to subsequent diagnosis of trigeminal neuralgia. The groups therefore consisted of 20 patients allocated to the stabilization splint group and 18 to the NTI splint group. All 38 participants attended all the clinical controls during the 3 months' observation period and none of the participants chose to change their splint type during the course of the trial.

The average jaw opening increased gradually in both splint groups during the observation period. The difference between the baseline and the measurements at 3 months was more statistically significant for both the stabilization type splint (paired t -test, mean difference 3.1 mm, $t=4.4$, d.f. = 19, $p<0.001$) and the NTI splint (1.8 mm, $t=2.1$, d.f. = 17, $p=0.05$). No

statistical differences were recorded between the two splint type groups at the 3-month observation (t -test, mean difference 2.7 mm, $p=0.29$).

The VAS scores for the self-reported headache (Figure 2) decreased on average between baseline and the 3-month examination in both splint type groups (Wilcoxon signed ranks tests, $p=0.002$ and $p=0.01$). This was also the case for the TMD-related pain (Figure 3) (Wilcoxon signed ranks tests, $p<0.001$ and $p<0.001$). No statistical differences between the two splint groups were recorded for these two outcomes at the 3-month observation (Mann-Whitney U-test, $p=0.70$ and 0.14).

The jaw muscle tenderness decreased between baseline and the 3-month examination for both splint type groups. For instance, the average number of muscles with severe tenderness upon palpation decreased from 5.7 to 1.7 in the NTI splint group and

Table II. Patient characteristics for the two splint groups at baseline prior to splint therapy

	Stabilization splint (mean–median) (<i>n</i> = 20)	NTI splint (mean–median) (<i>n</i> = 18)	Statistical difference (<i>p</i>)
Patient gender (female)	17	16	ns*
Average patient age (years)	34–33	39–41	ns†
Maximum jaw opening (mm)	42–44	40–41	ns†
Patients with myofascial pain (RDC/TMD)	9	10	ns*
Patients with myofascial pain + disk displacement (RDC/TMD)	11	7	ns*
Patients with disk displacement (RDC/TMD)	0	1	ns*
Patients with general musculoskeletal pain	16	7	0.02*
Patients with general headache	18	16	ns*
Headache (VAS score, 0–10)	5.4–6	5.7–7	ns‡
Subjective pain (VAS score, 0–10)	6.8–7	6.8–6	ns‡
Average number of TM joints with slight tenderness upon palpation	2.5–2	1.4–1‡	0.02‡
Average number of TM joints with tenderness upon palpation	0.2–0	0.6–0	0.04‡
Average number of muscles with tenderness upon palpation	3.6–3	3.2–3	ns‡
Average number of muscles with moderate tenderness upon palpation	3.8–4	3.3–4	ns‡
Average number of muscles with severe tenderness upon palpation	5.7–6	5.7–5	ns‡
Average “muscle tenderness score” based on palpation	34–34	33–33	ns‡

*Fisher exact test.

†Student's *t*-test.

‡Mann-Whitney U-test.

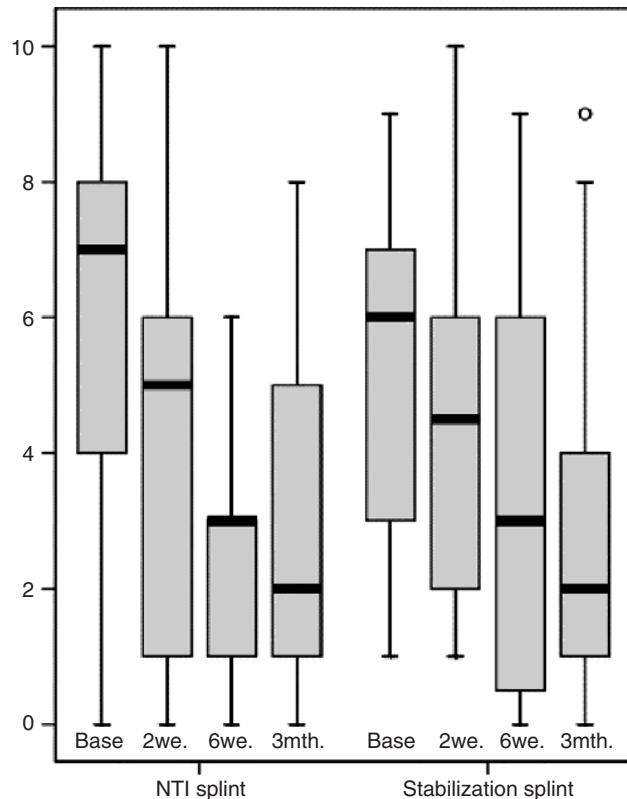


Figure 2. Headache reported by the participants according to VAS scores at baseline, and after 2 and 6 weeks and 3 months. Each box shows the median, quartiles, and extreme VAS scores on a scale between 0 and 10. A low VAS score signifies less headache.

from 5.7 to 1.9 in the stabilization splint group (Wilcoxon signed ranks tests, $p < 0.001$). In addition, the average total muscle tenderness following palpation decreased significantly in both splint groups (Figure 4) (Wilcoxon signed ranks tests, $p < 0.001$). No statistical differences were recorded between the two splint type groups at the 3-month observation (Mann-Whitney U-tests, $p = 0.39$).

It was noted that the palpation tenderness in the neck and the shoulder muscles did not improve in either of the two groups.

The comfort of splint use appeared to be similar for the two groups according to the VAS scores at each control examination (Mann-Whitney U-tests, $p > 0.05$), although a trend for higher comfort was reported for the NTI splint (Figure 5). The reported user comfort ranged throughout the full spectrum of the VAS scale, i.e. 1 to 10 for both splints, but the negative feedback differed slightly in nature for the two splint types. The most common complaint about the stabilization splints was that they were too tight ($n = 6$), which in most cases was corrected; a feeling of the splint being too big and/or a palatal over-extension ($n = 3$); and two patients reported discomfort in not being able to close the mouth ($n = 2$). The most common complaints associated with the NTI splint were dryness in the mouth while sleeping ($n = 6$) due to a forced open mouth caused by the splint design, the NTI splint falling out or being taken out unconsciously

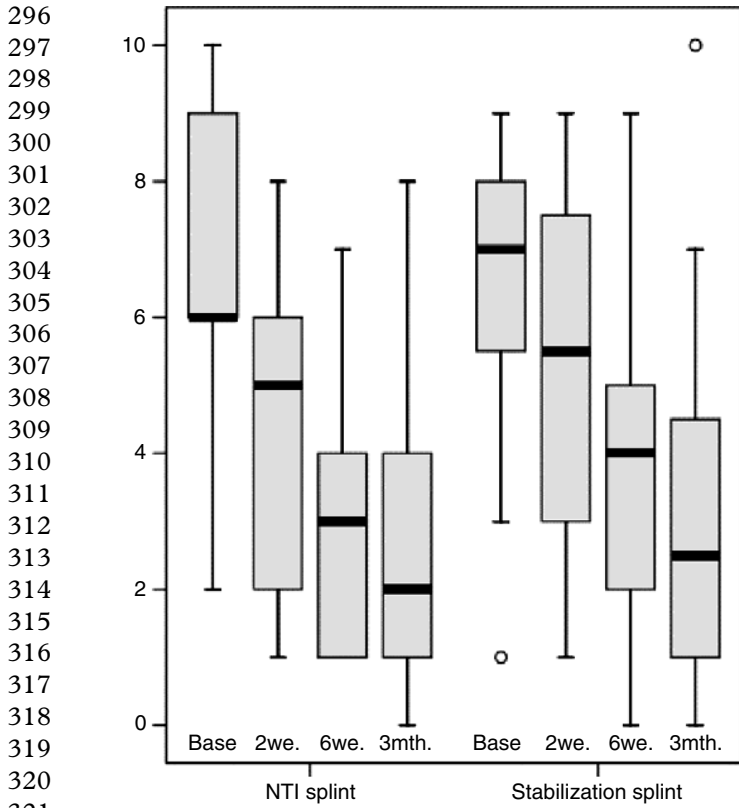


Figure 3. TMD-related pain reported by the participants according to VAS scores at baseline, and after 2 and 6 weeks and 3 months. Each box shows the median, quartiles, and extreme VAS scores on a scale between 0 and 10. A low VAS score signifies less pain.

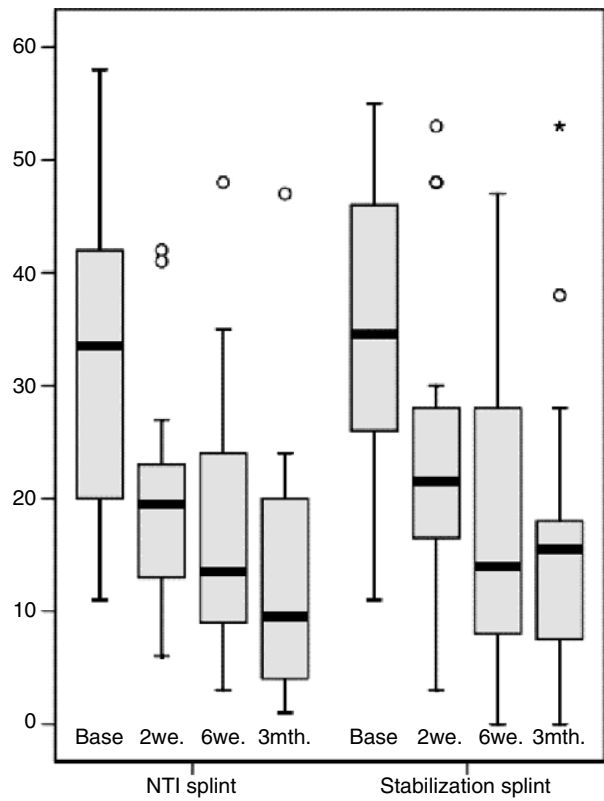


Figure 4. The average total muscle tenderness following palpation measured at baseline, and after 2 and 6 weeks and 3 months. The "pain index" on the vertical axis is the sum of the number of jaw muscles with slight tenderness $\times 1$ + muscles with moderate tenderness $\times 2$ + muscles with severe tenderness $\times 4$. A low pain index value signifies less pain.

while sleeping ($n=2$), and swallowing difficulties ($n=2$). One patient found the protruding tip of the NTI splint very annoying and another complained about sensitive lower front teeth.

Discussion

Within the confines of this clinical study, splint treatment using the stabilization type and the NTI splint types did not differ over 3 months. However, it has to be taken into consideration that the small sample size in the study may have caused a statistical type-2 error. This trial was conducted with a limited number of participants in order to balance between exposing a minimum number of patients to a potential risk of non-active treatment or even unpredictable adverse effects versus a meaningful sample size. Further and bigger randomized controlled trials need to be conducted to verify the findings.

A slightly higher proportion of the participants allocated to the stabilization splint group reported general musculoskeletal pain. Since the randomization process was followed rigidly, this phenomenon seems to be purely statistical. However, it is known that TMD patients with general muscle problems are less likely to benefit from TMD treatment [10]. It could therefore

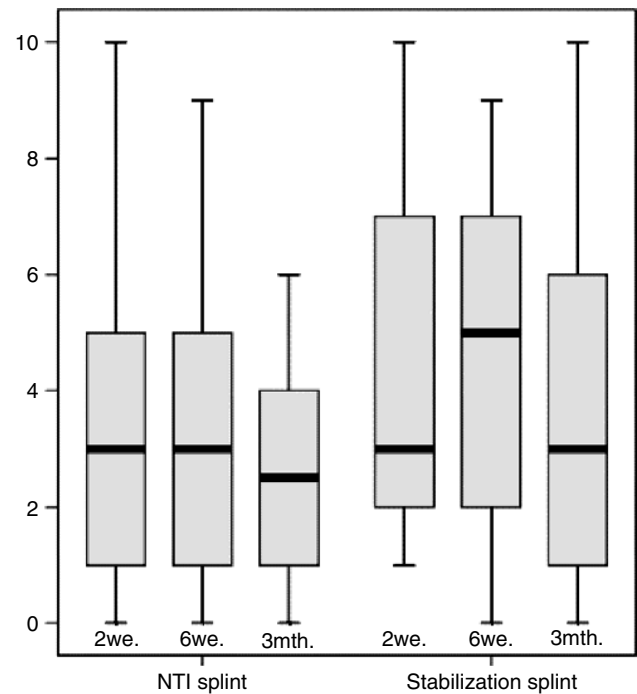


Figure 5. Comfort of splint use reported by the participants according to VAS scores after 2 and 6 weeks and 3 months. Each box shows the median, quartiles, and extreme VAS scores on a scale between 0 and 10. A low VAS score signifies good comfort.

355 be argued that the stabilization splint patients as a
 356 group were less likely to improve following the splint
 357 therapy compared to the NTI group.

358 In general, dentists and investigators are divided in
 359 opinion on whether splint therapy is an effective
 360 intervention or not for treating patients with TMD.
 361 The current study does not address this question, as
 362 this trial did not include patients who did not receive
 363 any splints. In Norway and, more widely, Scandinavia,
 364 the current understanding of splint therapy is that it is
 365 helpful for the patient [16,17]. Therefore, conducting
 366 a trial with a sample arm receiving only verbal
 367 counseling would be considered unethical according
 368 to the understanding of the Helsinki declaration that
 369 lay people cannot be offered ineffective therapy for
 370 the sake of research purposes. The seeming efficacy
 371 of both splint types can be explained by factors such
 372 as regression towards the mean, a Hawthorne
 373 effect, natural fluctuation of the TMD signs and
 374 symptoms, and other explanations [23]. The present
 375 trial thus does not answer whether both the NTI-
 376 tss and the stabilization splint bring about the
 377 observed general positive therapy outcomes or if none
 378 of them do.

379 The patients in this sample demonstrated a
 380 remarkably high intake of medicine and high preva-
 381 lence of general musculoskeletal pain and self-reported
 382 headache (Table I). This has also been a characteristic
 383 of other TMD patient samples in Scandinavia [15–
 384 18,21,22,24–27]. The gender proportions and TMD
 385 diagnoses of the current patient sample demonstrated a
 386 fairly similar distribution to previously reported study
 387 samples from the Dental Faculty of Oslo [21,22,27].
 388 Thus, the patients referred to, or seeking treatment
 389 here, are mainly women distressed by myofascial
 390 pain. Interestingly, neither of the patient groups
 391 showed any improvements of the neck and shoulder
 392 pain, which is consistent with observations in past
 393 patient cohorts [27].

394 Most of the previous literature supports the efficacy
 395 of stabilization splint therapy in spite of a wide
 396 spectrum of splint designs [1,5]. However, the exact
 397 therapeutic mechanism of the occlusal splint remains
 398 unclear, and although many theories have been
 399 proposed, there is little experimental evidence to
 400 support one theory over another because several
 401 factors may operate simultaneously [28]. When
 402 considering the positive results obtained with the
 403 variety of splint designs used, it is unlikely that a
 404 specific occlusal design of the splint is of much
 405 importance. Variations of specific details that have
 406 been addressed are for example flat plane occlusal
 407 splints with [8,9,29–33] or without cuspid ramps
 408 [7,34–40]. Another example of variation in detail is
 409 simultaneous contact of all opposing teeth [31–33,41],
 410 or opposing of only the posterior teeth [38].

411 It has been hypothesized in the literature that the
 412 presence of a foreign object in the palate may reduce
 413 nocturnal jaw muscle activity, possibly due to changes

in the oral tactile stimuli, a decrease of oral volume, and
 space for the tongue [11,12]. It has also been hypo-
 thesized that an intraoral splint may make the patient
 aware of the position and potentially harmful use of the
 jaw [7,9,42,43]; this has been labeled a “cognitive
 awareness” concept. It may be debated whether this
 explanatory model can only be applied to day-time
 splint use, but such a theory is not inconsistent with the
 claims of positive treatment outcomes for “placebo
 splints” [7–10,16,17], bite splints with only a frontal
 plateau [44], and even soft splints [45,46]. In this
 context, it is perhaps not surprising that there were no
 differences in treatment outcomes between the two
 splint designs in this trial.

One negative aspect of the NTI splint is that its
 design is such that irreversible occlusal changes can
 develop after prolonged use if the clinician does not
 monitor the use. Patients who receive a conventional
 fully occlusal stabilization splint can be advised to keep
 the splint for future use whenever the need arises. This
 advice cannot be given to patients receiving NTI
 splints, and dentists should actually warn against
 prolonged use of this splint type because of the
 increased risk of irreversible occlusal changes. Another
 argument against prolonged use of the NTI splint is its
 small dimensions, which can lead to swallowing or
 aspiration. Medical emergencies due to aspirated NTI
 splints have been reported in the case of three persons
 in the USA [47], and another occurrence has just been
 reported in Norway [48].

The current trial was relatively small. It included a
 heterogeneous patient sample and examined diag-
 noses, medication, comorbidity, subjective pain and
 distress experience, and was of limited duration. These
 factors may also explain the slight discrepancy between
 the present study results and the recent Swedish RCT
 [15]. This study could not confirm any positive treat-
 ment effect of the NTI splint. However, it is difficult to
 compare the results directly, since the latter study did
 not present any statistical analyses.

Several questions remain that can only be addressed
 in a trial of longer duration and perhaps also with a
 focus on more specific RCD/TMD diagnostic
 subclasses. These are primarily questions related to
 long-term patient compliance with use of the NTI
 splint and the reality of the potential for movements of
 teeth due to posterior tooth supra-eruption with or
 without anterior tooth intrusion. However, under-
 taking clinical trials must be weighted against the real
 or appeared health risk hazards relative to the sporadic
 reports of splint aspirations.

Acknowledgment

We thank Professor emeritus Bjørn L. Dahl for undertaking
 the randomization allocations and for general advice
 throughout the study.

References

- 414
415
416
417
418
419
420
421
422
423
424
425
426
427
428
429
430
431
432
433
434
435
436
437
438
439
440
441
442
443
444
445
446
447
448
449
450
451
452
453
454
455
456
457
458
459
460
461
462
463
464
465
466
467
468
469
470
471
472
- [1] Turp JC, Komine F, Hugger A. Efficacy of stabilization splints for the management of patients with masticatory muscle pain: a qualitative systematic review. *Clin Oral Investig* 2004;8:179–95.
 - [2] Dao TT, Lavigne GJ. Oral splints: the crutches for temporomandibular disorders and bruxism? *Crit Rev Oral Biol Med* 1998;9:345–61.
 - [3] Forssell H, Kalso E. Application of principles of evidence-based medicine to occlusal treatment for temporomandibular disorders: are there lessons to be learned? *J Orofac Pain* 2004;18:9–22.
 - [4] Al-Ani MZ, Davies SJ, Gray RJM, Sloan P, Glenny AM. Stabilisation splint therapy for temporomandibular pain dysfunction syndrome (Cochrane Review). In: *The Cochrane Library*. Chichester: John Wiley; 2004, Issue 1.
 - [5] Clark GT. Interocclusal appliance therapy. In: Mohl ND, Zarb GA, Carlsson GE, Rugh J, editors. *A textbook of occlusion*. Chicago: Quintessence Publishing; 1988.
 - [6] Ramfjord SP, Ash MM. Reflections on the Michigan occlusal splint. *J Oral Rehabil* 1994;21:491–500.
 - [7] Greene CS, Laskin DM. Splint therapy for the myofascial pain-dysfunction (MPD) syndrome: a comparative study. *J Am Dent Assoc* 1972;84:624–8.
 - [8] Rubinoff MS, Gross A, McCall WD. Conventional and nonoccluding splint therapy compared for patients with myofascial pain dysfunction syndrome. *Gen Dent* 1987;35:502–6.
 - [9] Dao TT, Lavigne GJ, Charbonneau A, Feine JC, Lund JP. The efficacy of oral splints in the treatment of myofascial pain of the jaw muscles. A controlled clinical trial. *Pain* 1994;56:85–94.
 - [10] Raphael KG, Marbech JJ. Widespread pain and the effectiveness of oral splints in myofascial face pain. *J Am Dent Assoc* 2001;132:305–16.
 - [11] Raphael KG, Marbach JJ, Klausner JJ, Teaford MF. Is bruxism severity a predictor of oral splint efficacy in patients with myofascial face pain? *J Oral Rehabil* 2003;30:17–29.
 - [12] Dube C, Rompre PH, Manzini C, Guitard F, de Grandmont P, Lavigne GJ. Quantitative polygraphic controlled study on efficacy and safety of oral splint devices in tooth-grinding subjects. *J Dent Res* 2004;83:398–403.
 - [13] Helkimo M. The NTI splint does not qualify the requirements as *lege artis*. *Tandläkartidningen* 2003.
 - [14] Socialstyrelsen. Expert report on the applicability of the NTI-splint. *Dnr 53-5294/2003*. 17 October 2003. Stockholm.
 - [15] Magnusson T, Adiels AM, Nilsson HL, Helkimo M. Treatment effects on signs and symptoms of temporomandibular disorders: a comparison between stabilisation splint and a new type of splint (NTI) A pilot study. *Swed Dent J* 2004;28:11–20.
 - [16] Ekberg E, Nilner M. A 6- and 12-month follow-up of appliance therapy in TMD patients: a follow-up of a controlled trial. *Int J Prosthodont* 2002;15:564–70.
 - [17] Ekberg E, Vallon D, Nilner M. The efficacy of appliance therapy in patients with temporomandibular disorders of mainly myogenous origin. A randomized, controlled, short-term trial. *J Orofac Pain* 2003;17:133–9.
 - [18] Helkimo M. Studies on function and dysfunction of the masticatory system. II. Index for anamnestic and clinical dysfunction and occlusal state. *Swed Dent J* 1974;67:101–21.
 - [19] Dworkin SF, LeResche L. Research diagnostic criteria for temporomandibular disorders: review, criteria, examinations and specifications, critique. *J Craniomandib Disord* 1992;2:301–55.
 - [20] NTI Tension Suppression System website. Available at: <http://www.nti-tss.com>. Accessed October 2004.
 - [21] Krogstad BS. Myofunctional aspects of craniomandibular disorders. [MSc Thesis]. Oslo: University of Oslo; 1992.
 - [22] Krogstad BS. Myofunctional and emotional aspects of temporomandibular disorders. [PhD Thesis]. University of Oslo; 1998.
 - [23] Dworkin SF, Drangsholt M. Clinical trials in temporomandibular disorders. In: *Interactive textbook on clinical symptom research*. National Institute of Dental and Craniofacial Research National Institutes of Health, Bethesda, USA. Available at: http://symptomresearch.nih.gov/chapter_22/index.htm. Accessed October 2004.
 - [24] Hagberg C. General musculoskeletal complaints in a group of patients with craniomandibular disorders (CMD). A case control study. *Swed Dent J* 1991;15:179–85.
 - [25] Hagberg C, Hagberg M, Kopp S. Musculoskeletal symptoms and psychosocial factors among patients with craniomandibular disorders. *Acta Odontol Scand* 1994;52:170–7.
 - [26] Wänman A. The relationship between muscle tenderness and craniomandibular disorders: a study of 35-year-olds from the general population. *J Orofac Pain* 1995;9:235–43.
 - [27] Krogstad BS, Jøkstad A, Dahl BL, Vassend O. The reporting of pain, somatic complaints, and anxiety in a group of patients with TMD before and 2 years after treatment: sex differences. *J Orofac Pain* 1996;10:263–9.
 - [28] Kreiner M, Betancor E, Clark GT. Occlusal stabilization appliances. Evidence of their efficacy. *J Am Dent Assoc* 2001;132:770–7.
 - [29] Linde C, Isacsson G, Jonsson BG. Outcome of 6-week treatment with transcutaneous electric nerve stimulation compared with splint on symptomatic temporomandibular joint disk displacement without reduction. *Acta Odontol Scand* 1995;53:92–8.
 - [30] Tsuga K, Akagawa Y, Sakaguchi R, Tsuru H. A short-term evaluation of the effectiveness of a stabilization-type occlusal splint therapy for specific symptoms of temporomandibular joint dysfunction syndrome. *J Prosthet Dent* 1989;61:610–13.
 - [31] Okeson JP, Kemper JT, Moody PM. A study of the use of occlusion splints in the treatment of acute and chronic patients with craniomandibular disorders. *J Prosthet Dent* 1982;48:708–12.
 - [32] Okeson JP, Kemper JT, Moody PM, Haley JV. Evaluation of occlusal splint therapy and relaxation procedures in patients with temporomandibular disorders. *J Am Dent Assoc* 1983;107:420–4.
 - [33] Beard CC, Clayton JA. Effect of occlusal splint therapy on TMJ dysfunction. *J Prosthet Dent* 1980;44:324–35.
 - [34] Willis WA. The effectiveness of an extreme canine-protected splint with limited lateral movement in treatment of temporomandibular dysfunction. *Am J Orthod Dentofac Orthop* 1995;107:229–34.
 - [35] Lundh H, Westesson P, Eriksson L, Brooks SL. Temporomandibular joint disk displacement without reduction. Treatment with flat occlusal splint versus no treatment. *Oral Surg Oral Med Oral Pathol* 1992;73:655–6.
 - [36] Lundh H, Westesson P, Kopp S. Anterior repositioning splint in the treatment of temporomandibular joints with reciprocal clicking: comparison with a flat occlusal splint and an untreated control group. *Oral Surg* 1985;60:131–6.
 - [37] Lundh H, Westesson P-L, Jisander S, Eriksson L. Disk-repositioning onlays in the treatment of temporomandibular joint disk displacement: comparison with a flat occlusal splint and with no treatment. *Oral Surg Oral Med Oral Pathol* 1988;66:155–62.
 - [38] Sheikholeslam A, Holmgren K, Riise C. Therapeutic effects of the plane occlusal splint on signs and symptoms of craniomandibular disorders in patients with nocturnal bruxism. *J Oral Rehabil* 1993;20:473–82.
 - [39] Holmgren K, Sheikholeslam A, Riise C. Effect of a full arch maxillary occlusal splint on parafunctional activity during sleep in patients with nocturnal bruxism and signs and

- 473 symptoms of craniomandibular disorders. *J Prosthet Dent* 1993;69:293–7.
- 474
- 475 [40] Suvinen T, Reade P. Prognostic features of value in the
- 476 management of temporomandibular joint pain-dysfunction
- 477 syndrome by occlusal splint therapy. *J Prosthet Dent*
- 478 1989;61:355–61.
- 479 [41] Kurita H, Kurashina K, Kotani A. Clinical effect of full
- 480 coverage occlusal splint therapy for specific temporomandibular disorder conditions and symptoms. *J Prosthet Dent* 1997;78:506–10.
- 481 [42] Clark GT, Beemsterboer PL, Solberg WK, Rugh JD. Nocturnal electromyographic evaluation of myofascial pain dysfunction in patients undergoing occlusal splint therapy. *J Am Dent Assoc* 1979;99:607–11.
- 482 [43] Rugh JD, Robbins JW. Oral habits disorders. In: Ingervall B, editor. Behavioral aspects in dentistry. New York: Appleton-Century-Crofts; 1982. p 179–202.
- 483
- 484
- 485
- 486
- 487
- 488
- 489
- 490
- 491
- 492
- 493
- 494
- 495
- 496
- 497
- 498
- 499
- 500
- 501
- 502
- 503
- 504
- 505
- 506
- 507
- 508
- 509
- 510
- 511
- 512
- 513
- 514
- 515
- 516
- 517
- 518
- 519
- 520
- 521
- 522
- 523
- 524
- 525
- 526
- 527
- 528
- 529
- 530
- 531
- [44] Dahlström L, Haraldson T. Bite plates and stabilization splints in mandibular dysfunction. A clinical and electromyographic comparison. *Acta Odontol Scand* 1985; 43:109–14.
- [45] Wright E, Anderson G, Schulte J. A randomized clinical trial of intraoral soft splints and palliative treatment for masticatory muscle pain. *J Orofacial Pain* 1995;9:192–9.
- [46] Pettengil CA, Growney MR, Schoff R, Kenworthy CR. A pilot study comparing the efficacy of hard and soft stabilizing appliances in treating patients with temporomandibular disorders. *J Prosthet Dent* 1998;79:165–8.
- [47] U.S. Food and Drug Administration – Center for devices and radiological health. Manufacturer and user facility device experience database (MAUDE). Available at <http://www.fda.gov/cdrh/mdr>. Accessed October 2004.
- [48] Fleten A, Gjerdet NR. Accidental swallowing of an incisal splint. *Nor Tannlegeforen Tid* 2004;114:638–9.